



**AXPENERGY**

**Gas to Power Strategy  
Florence, CO.**

**5 DECEMBER 2024**

“Electricity consumption from data centres, artificial intelligence (AI) and the cryptocurrency sector could double by 2026.”

*International Energy Agency, 2024 Electricity Report*

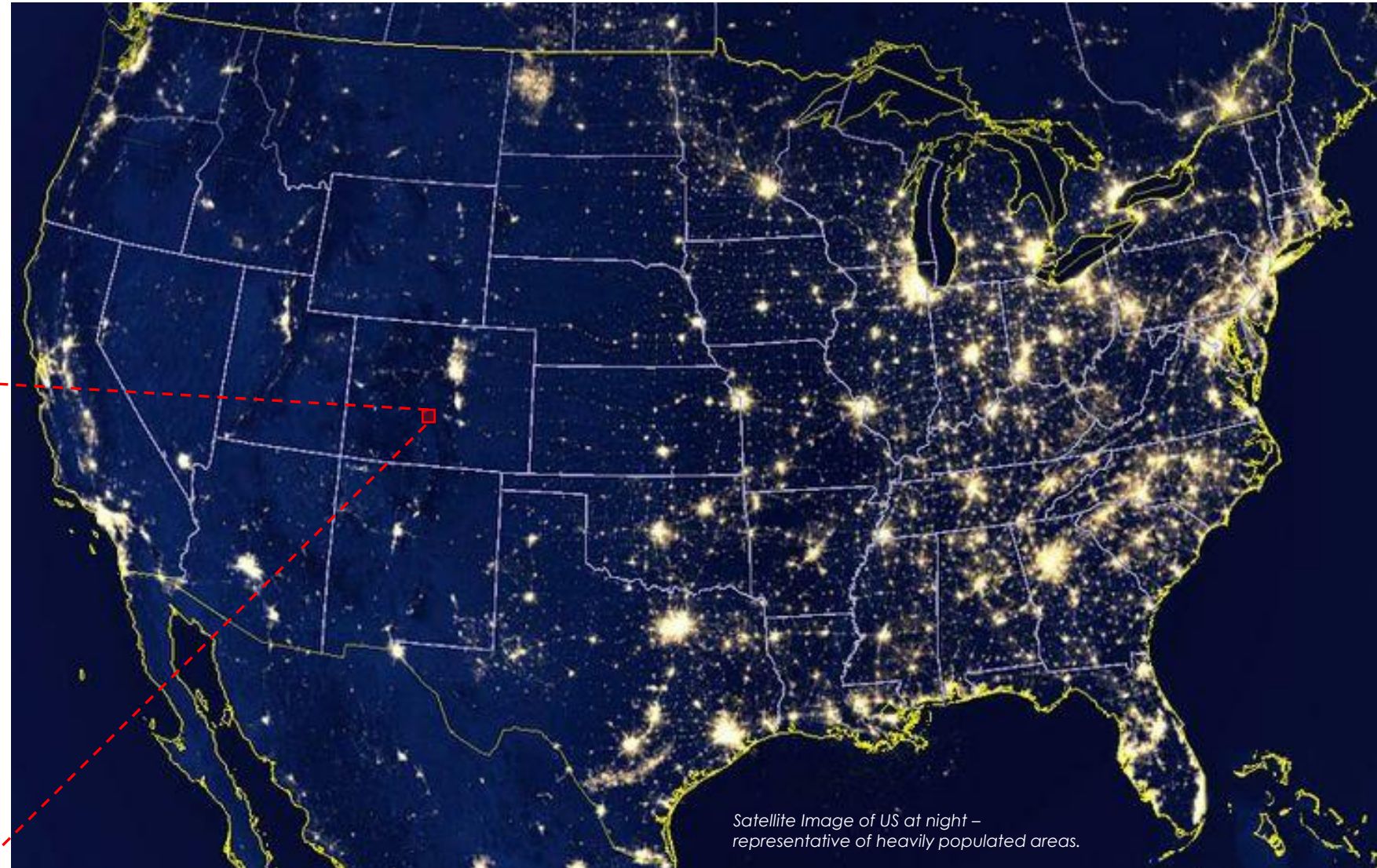
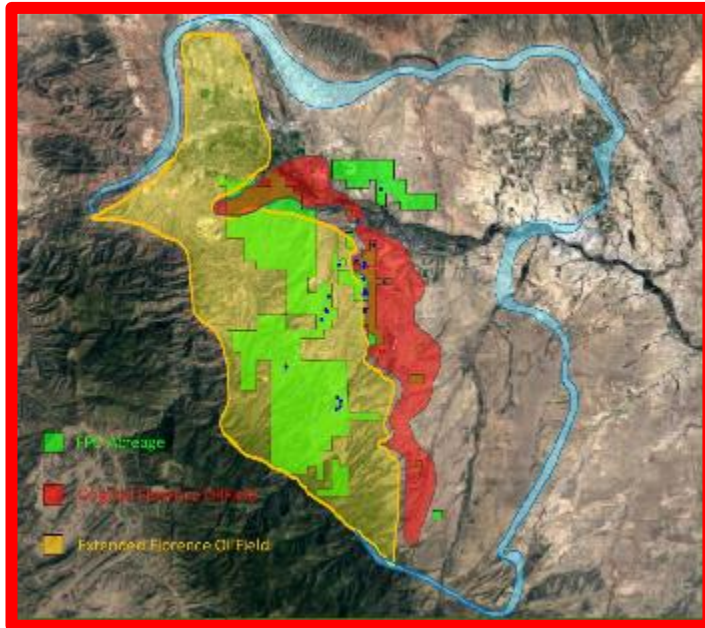
<https://iea.blob.core.windows.net/assets/18f3ed24-4b26-4c83-a3d2-8a1be51c8cc8/Electricity2024-Analysisandforecastto2026.pdf>



- Growth in demand for off-grid energy in the USA from data centre owners and operators has been a gamechanger for AXP
- AXP is now ideally positioned to capitalise on this opportunity with its 100%-owned Pathfinder Field that houses over 750 Bcf of gas
- First site established and connected in under 7 months with bitcoin mining activities to be undertaken by first customer Blackhart
- Very careful assessment of multiple proposals before finalising Joint Development Agreement with Blackhart Technologies in October



- .75 TCF Reserves
- Remote Location
- Oldest Oil Field in US
- Local Govt – O&G Friendly
- 5MW Immediately
- Significant potential beyond this



RESERVE & RESOURCE CATEGORY AS AT 1 JULY 2024	OIL [MBBL]	GAS [MMCF]	NGL [MBBL]	TOTAL [MBOE]
Proved Developed (PDP & PDNP)	64	-	-	64
Proved Undeveloped (PUD)	-	-	-	-
<b>Proved Reserves (1P)</b>	<b>64</b>	-	-	<b>64</b>
Probable Reserves	-	-	-	-
<b>Proved + Probable Reserves (2P)</b>	<b>64</b>	-	-	<b>64</b>
<b>Contingent Resource (2C)</b>	<b>78,018</b>	<b>743,764</b>	-	<b>201,937</b>

CONTINGENT RESOURCE CATEGORY <sup>(2)</sup>	OIL [MMBBL]	GAS [Bcf]	NGL [MMbbbl]	TOTAL [MMboe]
<b>Low Estimate (1C)</b>	57.55	591.63	-	<b>156.16</b>
<b>Mid Estimate (2C)</b>	78.02	743.76	-	<b>201.94</b>
<b>High Estimate (3C)</b>	106.12	883.18	-	<b>253.32</b>



(1) Refer announcement 20 September 2022. Mbbbl means thousand barrels of oil, MMcf means million standard cubic feet of gas and Mboe means thousand barrels of oil equivalent.

- Binding Joint Development Agreement (JDA) signed with US-headquartered Blackhart Technologies Ltd in October
- Extensive due diligence undertaken before executing this JDA
- Blackhart Technologies has successfully supported the development of several projects converting stranded natural gas into electricity to power data centres at sites throughout the United States
- Blackhart's focus is on establishing modular data centres for bitcoin mining
- JDA parties contemplate further build out beyond first three sites using AXP's existing 24-well portfolio



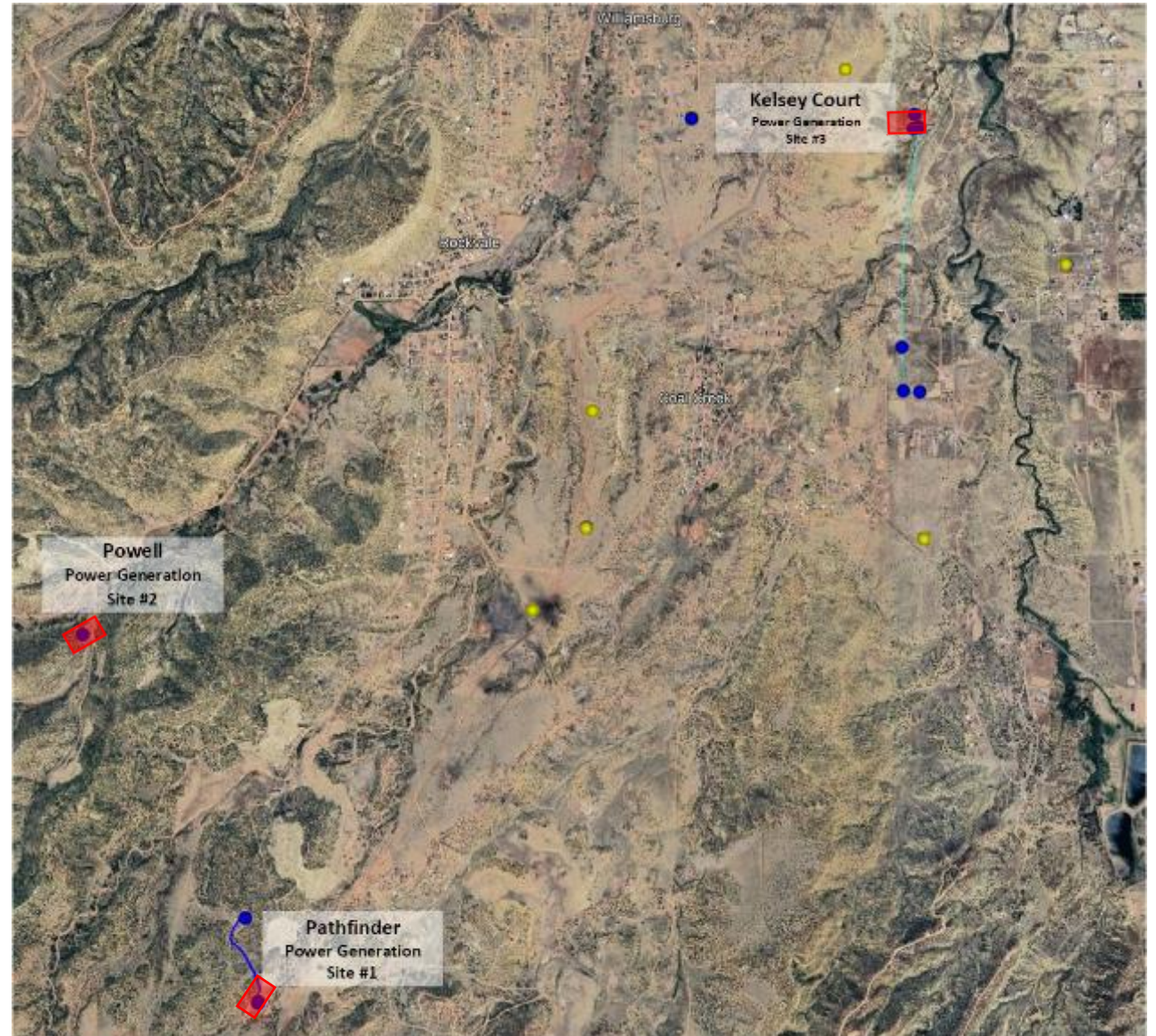
Florence is ideal for a large scale gas to power generation system

- Enormous Gas Reserves
- Remote location
- Existing petroleum operations
- Supportive Local Government
- Forgotten field



Site Name	Power (MW)
Pathfinder	3
JW Powell	1
Kelsey Court	1
<b>Total</b>	<b>5</b>

Site Name	Mcf/d	# 750 KW Generators	# Miners	# Containers
Pathfinder (Curr)	200	2	545	2
Pathfinder (Post)	300	3	818	3
JW Powell	200	2	545	2
Kelsey Court	200	2	545	2
<b>Total</b>	<b>900</b>	<b>9</b>	<b>2453</b>	<b>9</b>





# FIRST PROJECT: PATHFINDER – FORECAST TO GENERATE 3MW OF POWER



Requires Production  
Equipment & Tank Battery



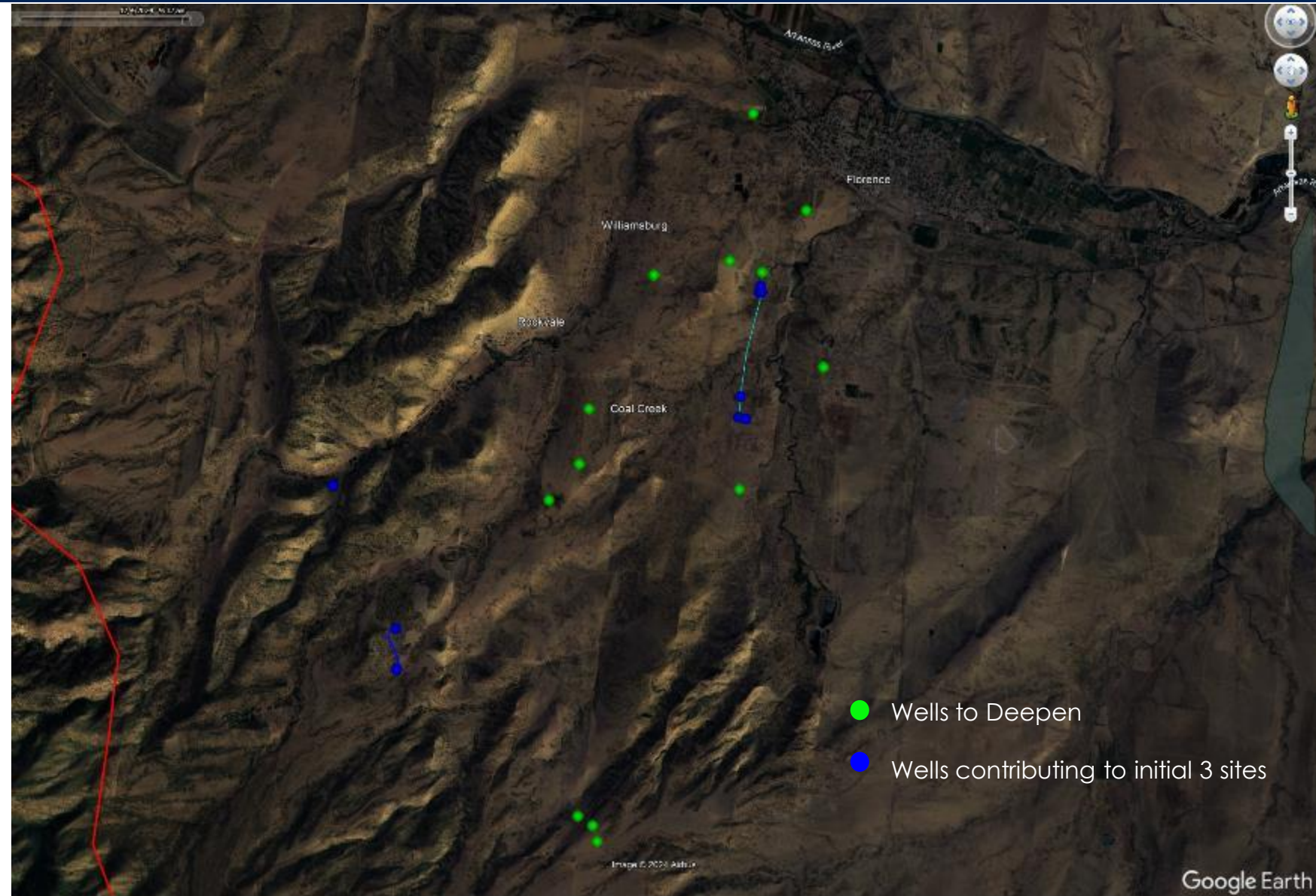
5 Wells  
Pierre Production  
Drilled in 2010  
Minimal Declines



Initial Focus – 5MW

Medium Term Focus – 25MW

- existing wells will be drilled deeper to access additional oil & gas in the lower formations



## Strong thematic

Uniquely positioned to capitalize on growing demand for data centres in the USA

## Large untapped resources

- ~750 bcf of gas and 78 million barrels oil (2C)
- Untapped formations
- Pathfinder's gas has never been monetized

## Multiple revenue streams

- Gas & power
- Oil sales
- Natural Gas Liquids (NGLs) as gas production increases
- Performance bonuses
- Other...



## Established project pipeline

- First data centre site connected at Pathfinder #2 well site
- An initial 5MW of power earmarked
- Another ~21 untapped wells to facilitate future project sites

## Strong partner

JDA with Blackhart Technologies with excellent counterparties

## Unique project location

- Resource is in a remote area
- Project strongly supported by local Government
- Potentially transformational for Florence



**AXPENERGY**

**THANK YOU**